



Hambrook Road

Holborough Lakes, Snodland ME6 5SQ

- CHAIN FREE
- Garage with Electric Opening Door
- Spacious Accommodation
- Juliette Balcony to Lounge
- Popular Holborough Lakes Development
- One Additional Car Parking Space
- Upgraded En Suite To Master Bedroom
- On Site Gym Membership Included

Offers Over £275,000 Leasehold

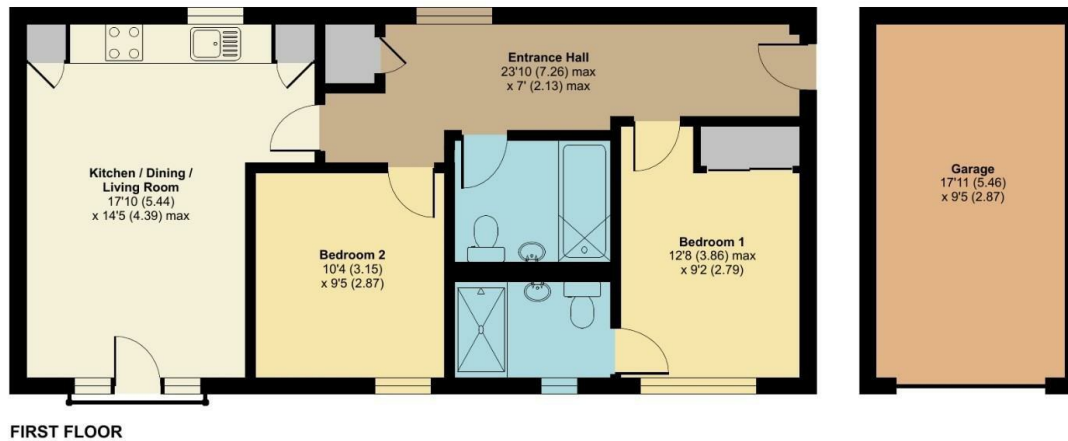
Local Authority Tonbridge and
Malling Borough Council
Council Tax Band C
EPC Rating C



Hambrook Road, Snodland, ME6

Approximate Area = 861 sq ft / 80 sq m (includes garage)

For identification only - Not to scale



Floor plan produced in accordance with RICS Property Measurement Standards incorporating International Property Measurement Standards (IPMS2 Residential). © nichecom 2023. Produced for Simon Miller & Company. REF: 961524

Malling Office

777 London Road, Larkfield, Aylesford,
Kent, ME20 6DE

Contact

01732 875706
larkfieldsales@simonmiller.co.uk
<https://simonmiller.co.uk/>

Agents Note: Whilst every care has been taken to prepare these particulars, they are for guidance purposes only. All measurements are approximate and for general guidance purposes only and whilst every care has been taken to ensure accuracy, they should not be relied upon and potential buyers/tenants are advised to recheck the measurements.

